

# City of Tualatin

## GARDEN CORNER CURVES

### Public Outreach Summary



#### CORRIDOR EXPERIENCE:

**71%**

of survey respondents travel on the corridor every day



**90%**

of survey respondents live immediately adjacent to the corridor or in an adjoining neighborhood



Many residents walked the corridor for the first time at the street closure event

#### SURVEY RESPONDENTS SAID:



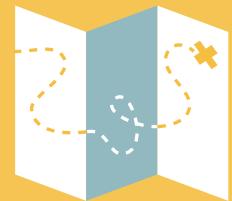
**98%**

do not feel safe walking on this corridor



**97%**

do not feel safe biking here



**58%**

said there are no safe and convenient alternate routes for walking or biking

#### TOP SAFETY CONCERNS:

No bike lanes



No sidewalks



Blind corners and limited visibility